

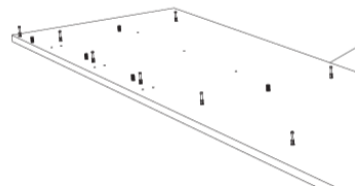
'TRADITIONAL' SHELF UNIT WITH OPTIONAL DRAWERS

You will need plenty of space in the bedroom to build units on the floor and carefully lift into position (preferably using 2 people). The units are not at their strongest until secured against the wall and between shelves and hangers.

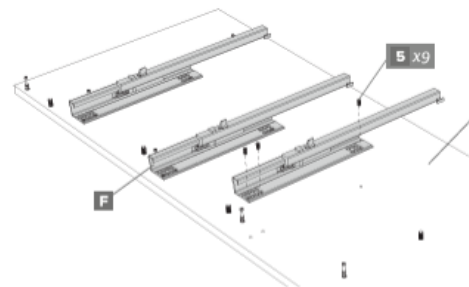
Unit sides are pre-drilled for 3 x fixed shelves and a plinth. Each fixed shelf is secured with 2 x metal Cam & Dowels, and 2 x traditional wood dowels. There are also 1mm drawer runner holes to accommodate up to 4 drawers. Unit sides are not handed. Any moveable shelves have a choice of 3 positions, mid, hi and low, represented by the 3 holes.

1. Lay one side panel on the floor with holes facing upward. Insert 6 wooden dowels into the 8mm holes (2 for each fixed shelf). Insert 6 metal dowels into the 5mm holes (2 for each fixed shelf). The fixed shelves are at the very top, bottom, and 1 at mid height above the top drawer.

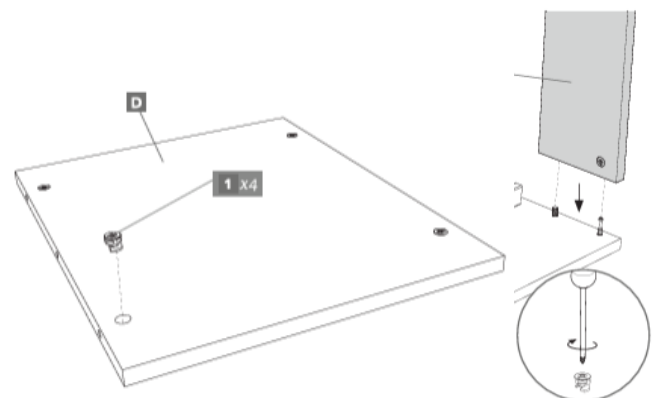
2. Insert 2 dowels for the plinth. The location of which defines the front of the unit. Ensure tight but do not over tighten.



3. Set out Emuca drawer runners, so that they open out towards the front. They are labelled left and right. The bottom runner should be located as low as is possible. The front edge should be set as far forward as possible, which is 20mm from the front edge. Screw into place using the countersunk screw in the drawer pack.



4. Repeat step 1,2 and 3 for the other side panel
5. Fit the 4 x cams into the 10mm holes in each of the 3 fixed shelves. Ensuring they are in the correct orientation to accept the metal dowels.
6. Fit the 3 fixed shelves and plinth to one of the end panels. Turn the cams through 180 degrees to lock them tightly in place
7. Attach the other side panel on top, securing cams in the same way. Rotate the assembly onto its back. Lift the assemble upwards so it is standing up, preferably using 2 people.
8. Refer to the separate Emuca instructions to build and fit drawers



See image below for approximate shelf and drawer positions:

